

 **CSR Report 2020**

ENVIRONMENTAL RESPONSIBILITY



STRONG LEADERSHIP



CUSTOMER SATISFACTION



# OUR 7 CSR PRINCIPLES

SOCIAL RESPONSIBILITY



EMPLOYEE SATISFACTION



ETHICAL BUSINESS



LOCAL ENGAGEMENT



ENVIRONMENTAL RESPONSIBILITY



## STRONG LEADERSHIP



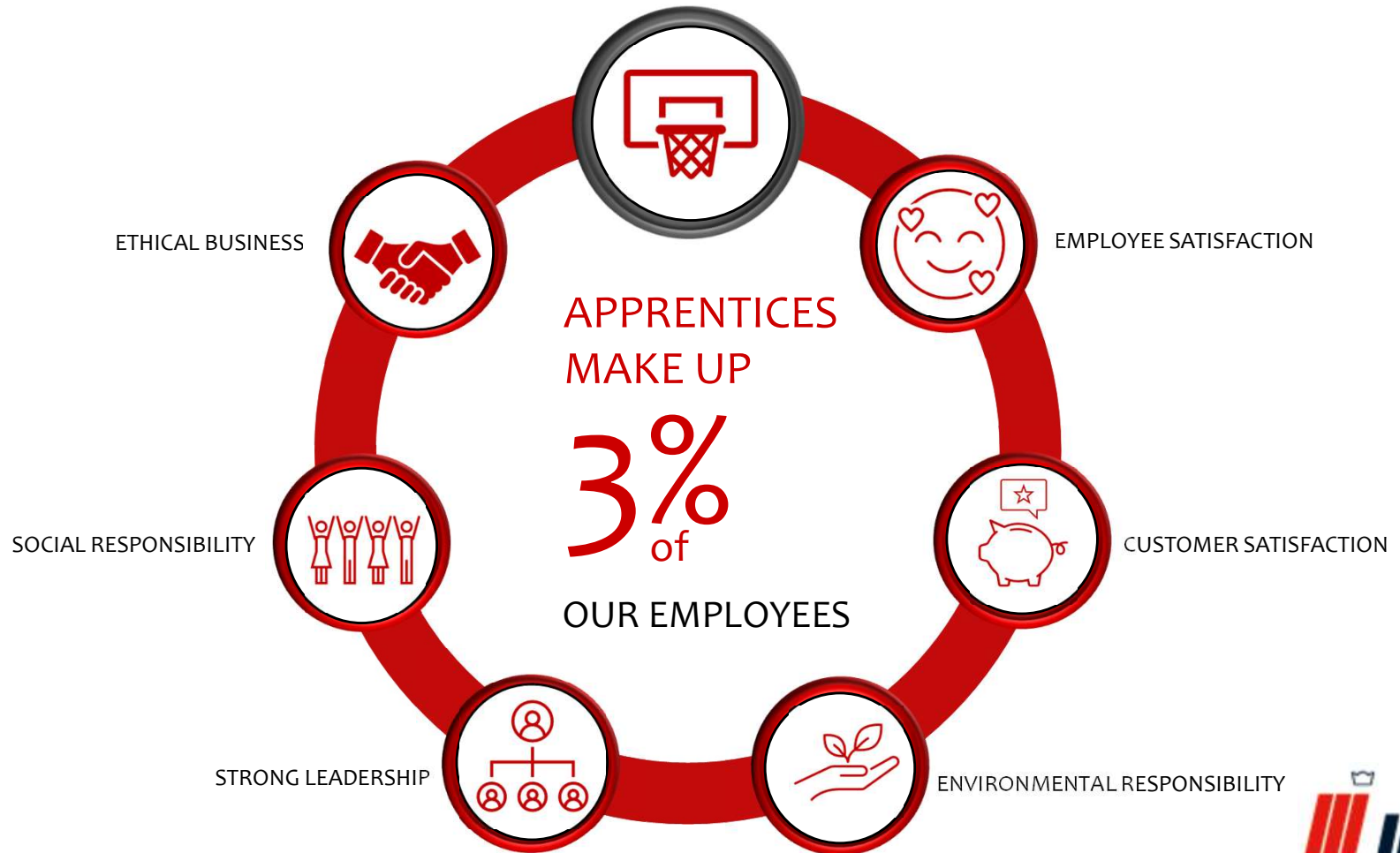
## SOCIAL RESPONSIBILITY



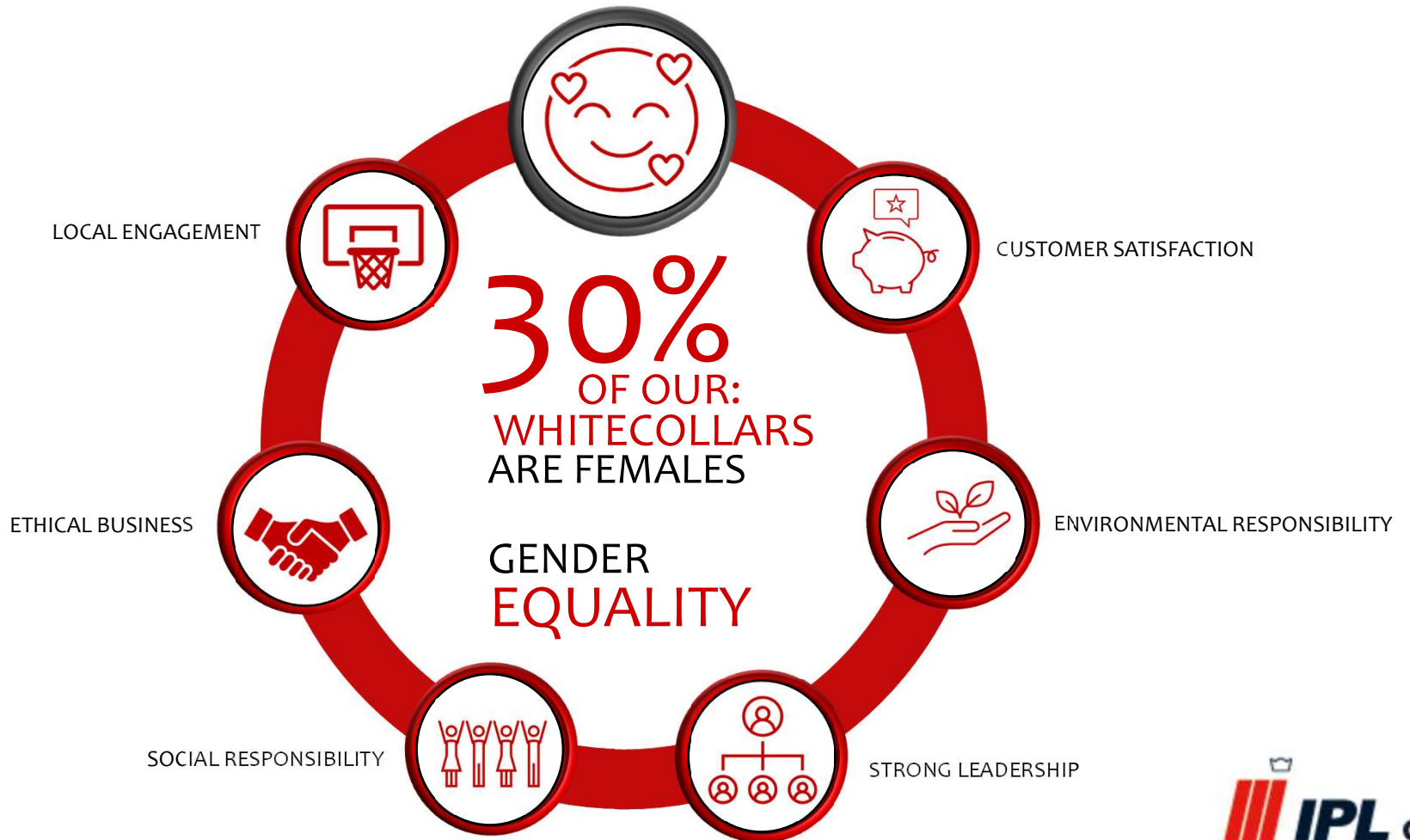
## ETHICAL BUSINESS



LOCAL ENGAGEMENT



EMPLOYEE SATISFACTION





## CUSTOMER SATISFACTION

customers measure 95% delivery performance



# CORPORATE SOCIAL RESPONSIBILITY

IPL **can** and **will** make a difference within **4 development goals**

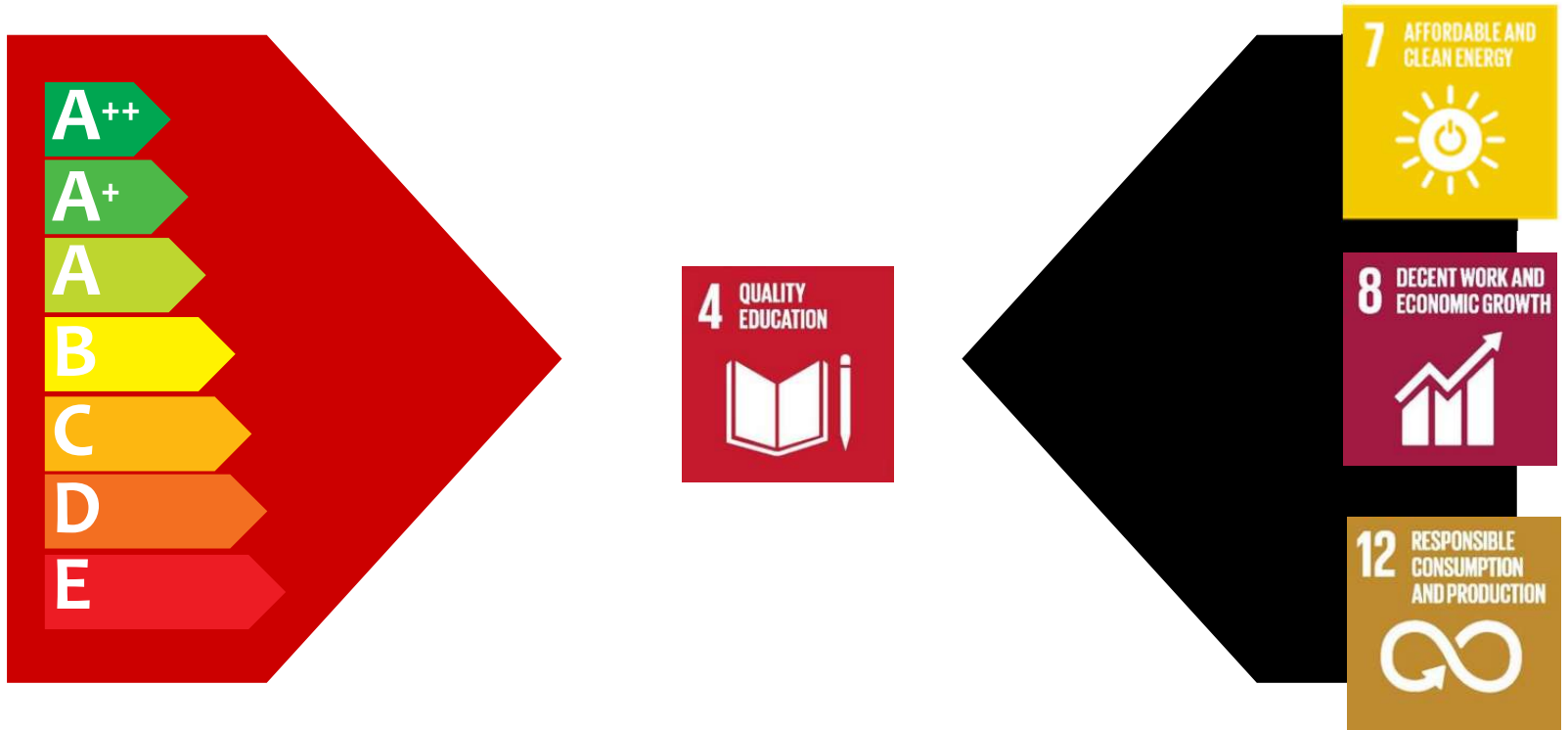


**SUSTAINABLE DEVELOPMENT GOALS**  
17 GOALS TO TRANSFORM OUR WORLD



# CORPORATE SOCIAL RESPONSIBILITY

We produce **only** products that contributes to sustainability





**Metalworking based on proud craftsmanship traditions and latest technology**

**Thank you**